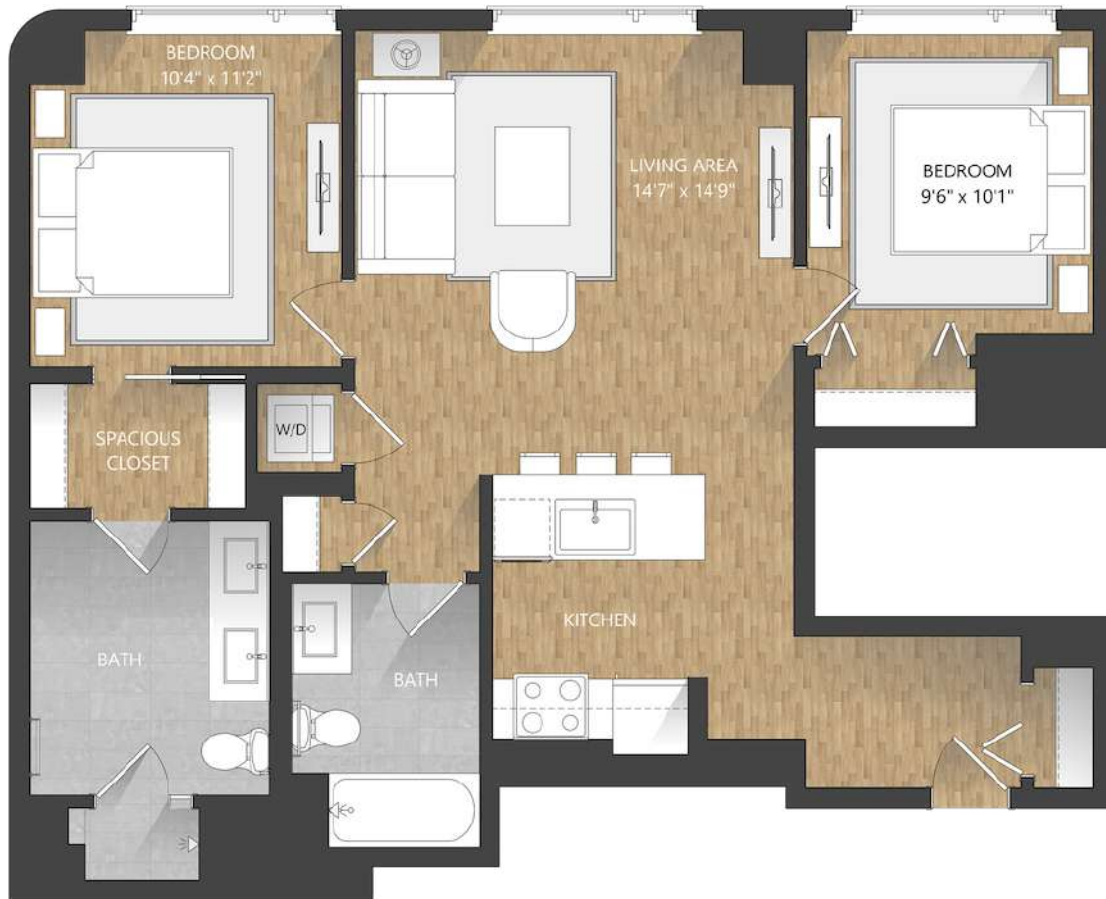


D1.1

2 BED / 2 BATH

950

SQ. FT.



The Noble

200 Spring Garden St. | Philadelphia, PA 19123

www.thenoblephilly.com

Floor plans are artist's rendering. All dimensions are approximate. Actual product and specifications may vary in dimension or detail. Not all features are available in every apartment home. Prices and availability are subject to change. Rent is based on monthly frequency. Additional fees may apply, such as but not limited to package delivery, trash, water, amenities, etc. Please see a representative for details.